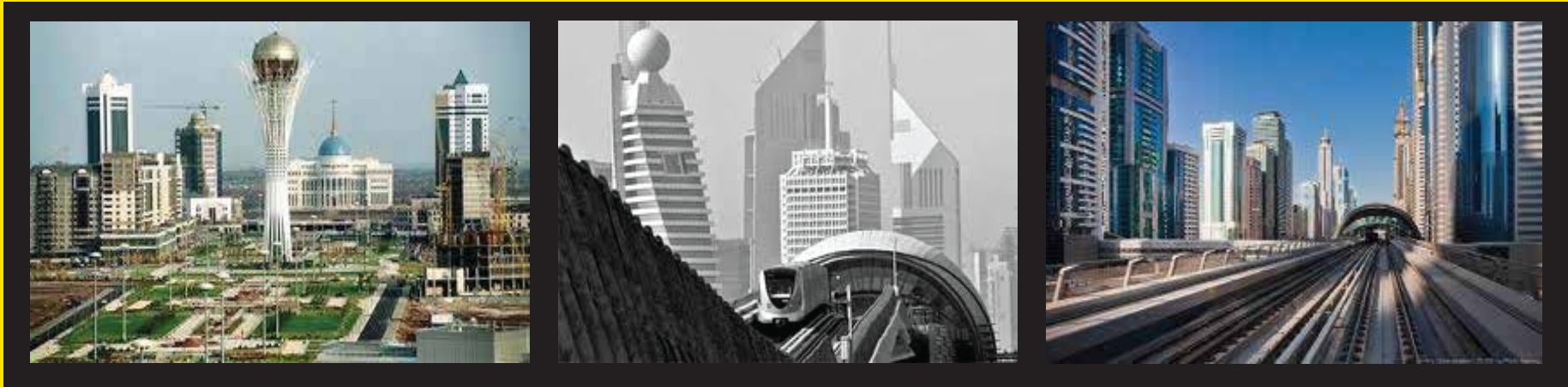




ELEKTROMAK[®]

GROUP

COMPANY PROFILE



Elektromak Engineering - Contracting Consulting Co.Ltd.

“ ATSO Group Member ”

Establishment - December 2002

Address : Varlık Mah. 100.Yıl Bulvarı No:55/11- ANTALYA

Telephone : +90 (242) 247 88 77 Fax : +90 (242) 247 88 66

www.elektromakgroup.com - www.elektromak.info



OUR GOALS

Our Vision;

To become a reliable, leading and pioneering enterprise in the national and international field with advanced technology and our engineering power by adding value to the institutions and organizations that we work with in Turkey and in the world.

Our Mission ;

To achieve our goals and our values with our solution partners in all geographies around the world.

As Elektromak, our values are;

- Our Enterprising, Innovative and Pioneering Structure
- Our speed at responding to a work and achieving the goal
- Our Team Spirit
- Our Credibility
- Our Solution Oriented Structure
- Our consciousness of Value Adding
- Our Respect for Human and Nature



ABOUT US

It is a "technology and engineering platform" which was established in 2002 and operates in the sectors of Electrical and Mechanical Contracting, Renewable Energy, Industrial Electrical & Electronics and Corporate Information Technologies.

Today, Elektromak San. Tic. Ltd. Sti. ,which puts its signature under many important projects in Turkey as well as in the regional countries with its international business partners, is proceeding with the goal of developing technological solutions and becoming leading enterprise in practice in the world arena.

Electrical and Mechanical Contracting,

Elektromak Group operates on electrical contracting, low current systems and mechanical contracting. It is specialized in application of large-scale projects and many facilities such as airports, industrial facilities, shopping centers, hotels, business centers, hospitals and GSM Operation centers.



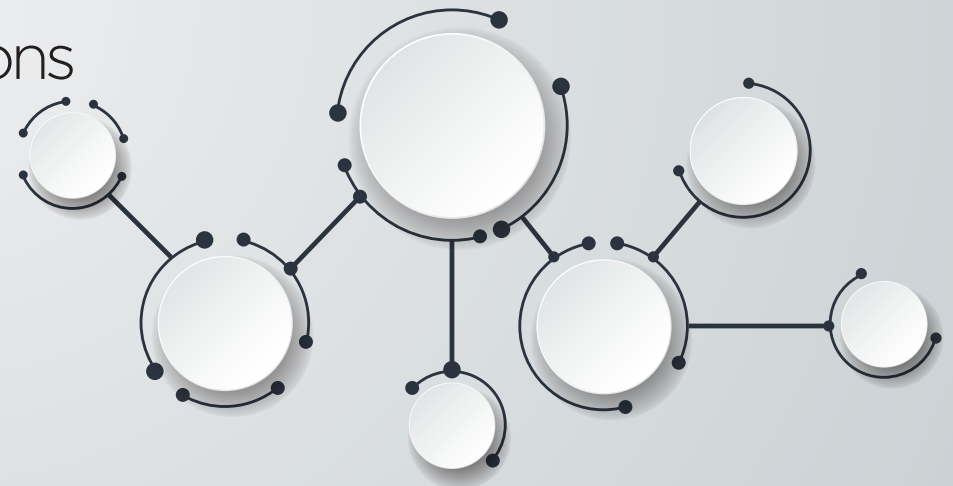


ELEKTROMAK[®]
GROUP



Our Expertise Areas;

- ⊗ LV and HV Electrical Design
- ⊗ Electrical Contracting
- ⊗ Weak Current Systems
- ⊗ Consultancy
- ⊗ Feasibility Works
- ⊗ Preparation of Master Plan
- ⊗ Strategic Planning
- ⊗ Contract Management and Inspections
- ⊗ Expert services
- ⊗ Environmental Impact Assessment
- ⊗ Avant Project
- ⊗ Application Project
- ⊗ As-Built Project
- ⊗ Energy Demand
- ⊗ Operation & Maintenance



SOME OF OUR REFERENCES

ROYAL RESORT HOTEL
BARDAK İNŞ./ FACTORY
LOGO FURNITURE/FACTORY
LOGO FURNITURE/FACTORY
TSK KARPUZ KALDIRAN FACILTY
CRYSTAL AURA HOTEL
CRYSTAL NİRVANA LAGOONS VİLLAS SUITES
CHARLOTTE PATISSERIE
ALİLA THERMAL HOTEL
NİL THERMAL HOTEL
NİL THERMAL RESİDENCE &APARTS
SHYMKENT KHADISHA HOTEL
ROBİNSON CLUB ÇAMYUVA
RİXOS ALATAU HOTEL
RİXOS EXCLUSİVE VİLLAS
RİXOS VİLLAPORT
RİXOS STAFF HOUSING & ADMINISTRATIVE OFFICES
İSTEK YEDİTEPE COLLEGE
İSTEK YEDİTEPE COLLEGE
İSTEK YEDİTEPE COLLEGE
AKSEKİ CITY HALL PARK PROJECT
LARA HİLL SMART HOME
SINAV COLLEGE İSMETPAŞA
UK ARCHITECTURE VILLAS
EPHESİA HOTEL KUŞADASI

GÖYNÜK /ANTALYA/TÜRKİYE
ALTİNOVA/ANTALYA/TÜRKİYE
ALTİNOVA/ANTALYA/TÜRKİYE
OSB.III/ANTALYA/TÜRKİYE
ANTALYA/TÜRKİYE
KEMER/ANTALYA/TÜRKİYE
BELDİBİ/ANTALYA/TÜRKİYE
ANTALYA/TÜRKİYE
AFYONKARAHİSAR/TÜRKİYE
AFYONKARAHİSAR/TÜRKİYE
AFYONKARAHİSAR/TÜRKİYE
SHYMKENT/KAZAKİSTAN
ÇAMYUVA/ANTALYA/TÜRKİYE
BELDİBİ/ANTALYA/TÜRKİYE
GÖCEK/MUĞLA/TÜRKİYE
GÖCEK/MUĞLA/TÜRKİYE
GÖCEK/MUĞLA/TÜRKİYE
KONYALTI/ANTALYA/TÜRKİYE
MANAVGAT/ANTALYA/TÜRKİYE
SERİK/ANTALYA/TÜRKİYE
AKSEKİ/ANTALYA/TÜRKİYE
KUNDU/ANTALYA/TÜRKİYE
MURATPAŞA/ANTALYA/TÜRKİYE
DÖŞEMEALTI/ANTALYA/TÜRKİYE
KUŞADASI/AYDIN/TÜRKİYE



SOME OF OUR REFERENCES



ALİLA THERMAL HOTEL 92.228 m2 AFYONKARAHİSAR / TÜRKİYE



*The country where the project is implemented
TÜRKİYE*

*The city where the project is implemented
AFYONKARAHİSAR*

*Investment Type
THERMAL HOTEL
Investment Area
92.228 m2*

The type of work done

ELECTRICTY PROJECT

*Designed as
2x1250 KVA Trafo
2x850 KVA Synchron Generator*



NİL THERMAL SUITE HOTEL / 32.452 m² / AFYONKARAHİSAR / TÜRKİYE



*The country where the project is implemented
TÜRKİYE*

*The city where the project is implemented
AFYONKARAHİSAR*

*Investment Type
THERMAL HOTEL
Investment Area
32.452 m²*

The type of work done

ELECTRICTY PROJECT

*Designed as
2x1250 KVA Trafo
2x850 KVA Synchron Generator*



CRYSTAL AURA BEACH HOTEL / 26.587 M2 / KEMER-ANTALYA / TÜRKİYE



*The country where the project is implemented
TÜRKİYE*

*The city where the project is implemented
ANTALYA/KEMER*

*Investment Type
HOTEL
Investment Area
26.587 m2*

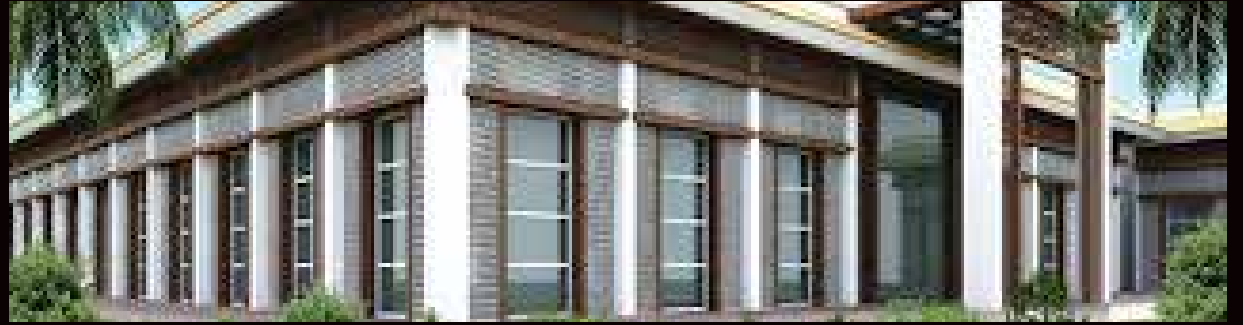
The type of work done

ELECTRICAL CONTRACTING

*Designed in renovating form as
1x1600 KVA Trafo
Total Installed Power 1600 KVA
1x1130 KVA Generator*



CRYSTAL NIRVANA LAGOON HOTEL / BELDİBİ-KEMER / ANTALYA / TÜRKİYE



CRYSTAL NİRVANA LAGOON HOTEL / 152.000 M2 / BELDİBİ-ANTALYA / TÜRKİYE



*The country where the project is implemented
TÜRKİYE*

*The city where the project is implemented
ANTALYA/BELDİBİ*

*Investment Type
HOTEL
Investment Area
152.000 m2*

The type of work done

ELECTRICTY PROJECT & ELECTRICAL CONTRACTING

*Designed as
3x1000 KVA Trafo
1x1600 KVA Trafo
1x2500 KVA Trafo
Total Installed Power
7100 KVA=7,1 MVA
5x900=4500 KVA Synchron Generator*

İSTEK YEDİTEPE COLLEGE /22.155 M2 / KONYALTI/ANTALYA / TÜRKİYE



The country where the project is implemented
TÜRKİYE

The city where the project is implemented
ANTALYA

Investment Type
COLLEGE
Investment Area
22.155 m²

The type of work done

ELECTRICTY PROJECT & ELECTRICAL CONTRACTING

Designed as
1x1000 KVA Trafo
Total Installed Power
1000 KVA
1x900 KVA Generator

İSTEK YEDİTEPE COLLEGE /18.112 M2 / MANAVGAT / ANTALYA / TÜRKİYE



The country where the project is implemented
TÜRKİYE

The city where the project is implemented
ANTALYA

Investment Type
COLLEGE
Investment Area
18.112 m²

The type of work done

ELECTRICTY PROJECT

Designed as
1x1000 KVA Trafo
Total Installed Power
1000 KVA
1x900 KVA Generator

EXCLUSIVE VILLAS RIXOS / 15.104 M2 / GÖCEK-MUĞLA / TÜRKİYE



*The country where the project is implemented
TÜRKİYE*

*The city where the project is implemented
MUĞLA/FETHİYE/GÖCEK*

*Investment Type
Exclusive VILLAS
Investment Area
15.104 m2*

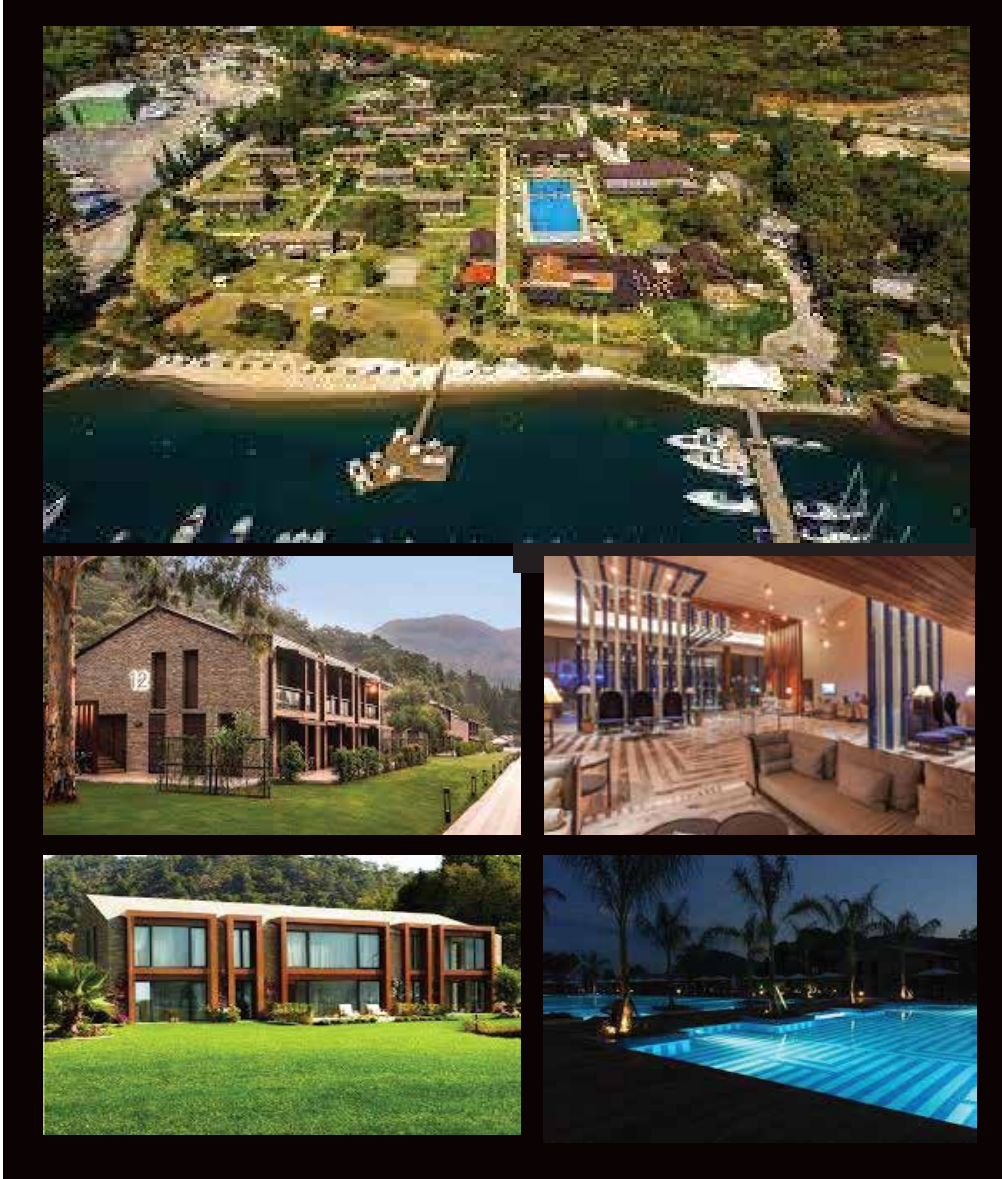
The type of work done

ELECTRICTY PROJECT & ELECTRICAL CONTRACTING

*Designed as
1x1000 KVA Trafo
Total Installed Power
1000 KVA
1x900 KVA Generator*



VILLAPORT RIXOS / 35.412 M2 / GÖCEK-MUĞLA / TÜRKİYE



The country where the project is implemented
TÜRKİYE

The city where the project is implemented
MUĞLA/FETHİYE/GÖCEK

Investment Type
Exclusive VILLAS
Investment Area
35.412 m2

The type of work done

ELECTRICTY PROJECT & ELECTRICAL CONTRACTING

Designed as
2x1000 KVA Trafo
Total Installed Power
2000 KVA
2x900 KVA Generator



VILLAPORT RIXOS / 35.412 M2 / GÖCEK-MUĞLA / TÜRKİYE



RIXOS ALATAU / 28.512 M2 / BELDİBİ - GÖYNÜK / ANTALYA / TÜRKİYE



*The country where the project is implemented
TÜRKİYE*

*The city where the project is implemented
ANTALYA/BELDİBİ/GÖYNÜK*

*Investment Type
HOTEL
Investment Area
28.512 m2*

The type of work done

ELECTRICTY PROJECT & ELECTRICAL CONTRACTING

*Designed as
1x1600 KVA Trafo
Total Installed Power
1600 KVA
1x1100 KVA+1x575 KVA
1675 KVA Generator*



KHADISHA HOTEL / 32.442 M2 / SHYMKENT / KAZAKHSTAN



*The country where the project is implemented
KAZAKHSTAN*

*The city where the project is implemented
SHYMKENT*

*Investment Type
HOTEL*

*Investment Area
32.442 m²*

The type of work done

ELEC. PROJECT CONCLTANCY

*Designed as
2x(2x1600) KVA Trafo
Total installed Power
3200 KVA
4 (1600 kva) Trafo are used due to snip.
2x1475 KVA Generator*



ROBINSON CLUB /43.507 M2 / ÇAMYUVA - KEMER/ANTALYA / TÜRKİYE



The country where the project is implemented
TÜRKİYE

The city where the project is implemented
ANTALYA/KEMER/ÇAMYUVA

Investment Type
HOTEL
Investment Area
43.507 m²

The type of work done

ELECTRICTY PROJECT & ELECTRICAL CONTRACTING

Renovation / Completed in 2015

LOGO FURNITURE FACTORY /4601 M2 / ANTALYA/ORGANİZE SANAYİ BÖLGESİ III / TÜRKİYE



*The country where the project is implemented
TÜRKİYE*

*The city where the project is implemented
ANTALYA/OSB III.*

*Investment Type
FACTORY
Investment Area
4.601 m2*

The type of work done

ELECTRICITY PROJECT & ELECTRICAL CONTRACTING

*Designed as
1x630 KVA Trafo
Total installed Power
630 KVA
475 KVA Generator
Completed in 2015*

